

Burton – VA Beach (Line 27) 115 kV Electric Transmission Line Rebuild Project Update

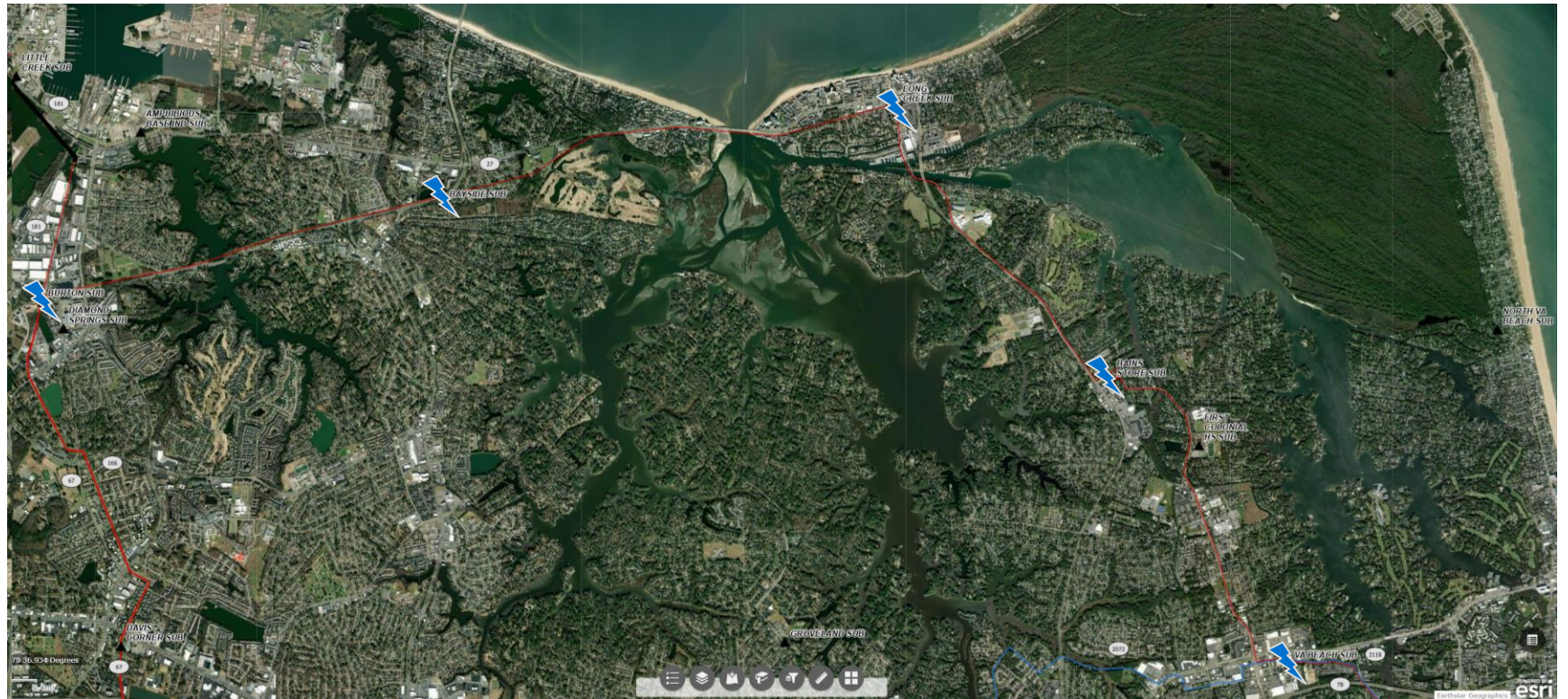
**Bayfront Advisory Commission Meeting
March 20, 2025**



**Dominion
Energy®**

Project Overview

- Line 27 is a 115 kilovolt (kV) electric transmission line in north Virginia Beach running from the Burton Substation to the Bayside Substation, then Long Creek Substation, then Bains Store Substation, and ending at the Virginia Beach Substation.
- This project is necessary to replace aging infrastructure and maintain reliable service for our customers.
- Uses existing right of way corridor.
- 12.7 miles long



Additional Project Context

- After nearly five decades of dependable service, the existing structures and components of Line 27 are at the end of life and need to be replaced.
- Pole inspections revealed degradation of wooden structures from decay and woodpecker damage. Salt contamination also requires replacement of transmission equipment.
- 187 wooden structures will be replaced with steel structures. Some existing concrete and steel poles will remain, but most will be replaced.
- Distribution power lines are on most of these electric transmission structures and will continue to be.

Structures

Structure Comparison:



Construction Schedule

*Pending weather and progress

PRECONSTRUCTION

- **March – May 2025:** Access, staking new structure locations, forestry

CONSTRUCTION

PHASE 1: Burton – Bayside

- **April 2025 – September 2025**

PHASE 2: Long Creek – Bains Store

- **September 2025 – April 2026**

PHASE 3: Bains Store – Virginia Beach

- **April 2026 – September 2026**

PHASE 4: Bayside – Long Creek

- **September 2026 – December 2027**



This map is intended to serve as a representation of the project area and is not intended for detailed engineering purposes.

Community Communications-to-Date

Crews Will Be In Your Area

Burton-Virginia Beach Surveying and Inspection for 115 Kilovolt (kV) Transmission Line and Structures

At Dominion Energy, we provide the reliable, affordable, and increasingly clean energy that powers our customers every day. You are receiving this postcard because we are surveying the right of way corridor between the Burton and Virginia Beach substations located in the City of Virginia Beach, Virginia.



SCAN HERE TO LEARN MORE

Through February 2024, you may notice Dominion Energy crews and contractors accessing the right of way on foot or in light duty vehicles. Survey activities include staking, flagging, and measuring in the approximately 13-mile long right of way. These activities are in preparation for a project involving the existing 115 kilovolt (kV) electric transmission line.

Thank you for your patience and understanding as we work to complete surveying in this area.



This map is intended to serve as a representation of the project area and is not intended for detailed engineering purposes.

Protecting the grid against natural and man-made acts is a top priority. You can learn more about our commitment to safety at powerlines101.dominionenergy.com.

SURVEYING ACTIVITIES

JANUARY – FEBRUARY 2024
VIRGINIA BEACH, VIRGINIA
Crews will mark areas with flags and stakes



Crews in your area



Route inspection

CONTACT US

Website: powerlines101.dominionenergy.com
Phone: 888-291-0190
Email: powerline@dominionenergy.com

Project
Announcement
Mailer
January 2024

Local Power Line Project Information

Burton – Virginia Beach 115 Kilovolt (kV) Electric Transmission Line Rebuild Project

At Dominion Energy, we are committed to providing the reliable, affordable and increasingly clean energy that powers our customers every day. You are receiving this postcard because we are planning to rebuild approximately 13 miles of aging 115 kilovolt (kV) electric transmission line between our Burton and Virginia Beach substations located in the City of Virginia Beach, Virginia.



SCAN HERE TO LEARN MORE

After nearly five decades of dependable service, the existing structures and components are at the end of their service life and need to be replaced. We are proposing to rebuild the current wooden pole structures with weathering steel monopoles. This project will be completed in phases.

Earlier this year, our crews surveyed the right of way on foot or in light duty vehicles. After all necessary permits and approvals are received, we plan to begin preconstruction activities.

We will update you as this project progresses. Thank you for your patience and understanding as we work to maintain electric reliability for all our customers.



This map is intended to serve as a representation of the project area and is not intended for detailed engineering purposes.

Protecting the grid against natural and man-made acts is a top priority. You can learn more about our commitment to safety at powerlines101.dominionenergy.com.

TENTATIVE CONSTRUCTION TIMELINE

PHASE 1: BURTON – BAYSIDE
Spring/Summer 2025
PHASE 2: LONG CREEK – BAINS STORE
Fall 2025/Winter 2026
PHASE 3: BAINS STORE – VA BEACH
Spring/Summer 2026
PHASE 4: BAYSIDE – LONG CREEK
Fall 2026/Winter 2027
Construction for all four phases is expected to conclude in winter 2027.

CONTACT US

Website: powerlines101.dominionenergy.com
Phone: 888-291-0190
Email: powerline@dominionenergy.com

Project Update
Mailer
August 2024

BURTON – VA BEACH 115 Kilovolt (kV) TRANSMISSION LINE REBUILD PROJECT

Sorry We Missed You

To prepare for this project, we are requesting your permission to conduct real estate activities on your property. Please contact me at your earliest convenience.

DATE:

CONTACT:

PHONE:

Thank you in advance for responding to this request.



Property
Door Hanger
April 2024

BURTON – VA BEACH 115 Kilovolt (kV) TRANSMISSION LINE REBUILD PROJECT

AT DOMINION ENERGY, we are committed to keeping our neighbors informed about the projects in the communities we serve.

We are requesting your permission to conduct real estate activities on your property.

These activities will help us gather information necessary for the Burton to VA Beach project:

- Assessing the landscape and wetland locations, which may include placing small flags within the proposed right of way
- Placing small flags on property corners
- Archaeological reviews
- Preliminary engineering investigations

Please visit our website at DominionEnergy.com/burton-virginia-beach to learn more about the project. You may also contact us by calling 888-291-0190 or sending an email to powerline@dominionenergy.com.

Our respect for your property and privacy is paramount. Your participation is greatly appreciated.



SCAN HERE TO LEARN MORE ABOUT OUR CONSTRUCTION PROCESSES.



Project Website
January 2024
www.dominionenergy.com/burton-virginia-beach

Community Communications-to-Date (continued)

Phase 1 Open House Invite Mailer January 2025 (cancelled due to weather)

Join us for a Community Open House

Burton-Virginia Beach 115 kV Transmission Line Rebuild Project – Phase 1

At Dominion Energy, we are committed to providing the reliable, affordable, and increasingly clean energy that powers your every day. To replace aging equipment and maintain reliable service for our customers, we are rebuilding an existing 115 kilovolt (kV) electric transmission line starting from our Burton Substation through our Bayside Substation, Bains Store Substation, and ending at our Virginia Beach Substation.

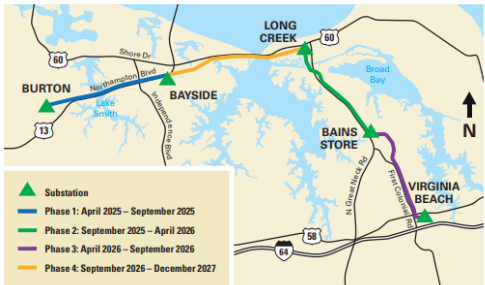


SCAN HERE TO LEARN MORE

Phase 1 of this project, from Burton Substation to Bayside Substation, is scheduled to start in April 2025. Preconstruction activities will take place from March 2025 to May 2025.

To learn more about Phase 1, we invite you to join us for an open house community meeting. You will have the opportunity to learn details about the project and have your questions answered by our project team.

We are dedicated to working safely and courteously in your community. Thank you for your patience while we complete this important reliability project.



This map is intended to serve as a representation of the project area and is not intended for detailed engineering purposes.

Protecting the grid against natural and man-made acts is a top priority. You can learn more about our commitment to safety at powerlines101.dominionenergy.com.

We Invite You to Learn More About This Project

Open House Community Meeting

Thursday, February 20, 2025
5:30 p.m. to 7:30 p.m.

Bayside Baptist Church
1920 Pleasure House Road
Virginia Beach, VA 23455



CONTACT US

Website: dominionenergy.com/burton-virginia-beach
Phone: 888-291-0190
Email: powerline@dominionenergy.com

Phase 1 Virtual Community Meeting Invite Mailer February 2025

Join us for a Virtual Community Meeting

Burton-Virginia Beach 115 kV Transmission Line Rebuild Project – Phase 1

At Dominion Energy, we are committed to providing the reliable, affordable, and increasingly clean energy that powers your every day. To replace aging equipment and maintain reliable service for our customers, we are rebuilding an existing 115 kilovolt (kV) electric transmission line starting from our Burton Substation through our Bayside Substation, Bains Store Substation, and ending at our Virginia Beach Substation.



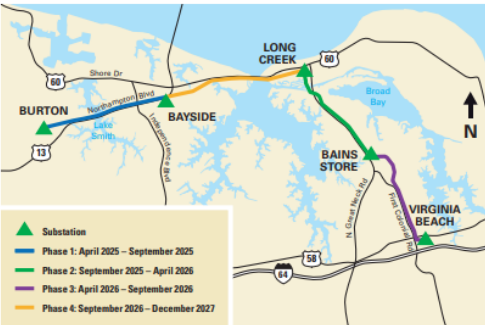
SCAN HERE TO LEARN MORE

Phase 1 of this project, from Burton Substation to Bayside Substation, is scheduled to start in April 2025. Preconstruction activities will take place from March 2025 to May 2025.

To learn more about Phase 1, we invite you to join us for a virtual community meeting. You will have the opportunity to learn details about the project and have your questions answered by our project team.

If you are unable to attend the virtual meeting, a recording will be available on the project website. This virtual meeting takes the place of the in-person meeting that was cancelled in February.

We are dedicated to working safely and courteously in your community. Thank you for your patience while we complete this important reliability project.



This map is intended to serve as a representation of the project area and is not intended for detailed engineering purposes.

Protecting the grid against natural and man-made acts is a top priority. You can learn more about our commitment to safety at powerlines101.dominionenergy.com.

LEARN MORE ABOUT THIS PROJECT

Virtual Community Meeting

Wednesday, March 5, 2025
6:00 p.m. to 7:00 p.m.

Link will be posted on project website



CONTACT US

Website: dominionenergy.com/burton-virginia-beach
Phone: 888-291-0190
Email: powerline@dominionenergy.com

Burton-Virginia Beach 115 kV Transmission Line Rebuild Project - Phase 1 Virtual Community Meeting 20250305_233145 Meeting Recording

WELCOME!

The virtual community meeting will begin shortly.

Powering Your Every Day.™

1

SEAN R. Doherty (Service)

MJ Melissa ... Chilton L ... JB Jodi A Br ... Marie C ... Jerry T ... Jacob K ... Cherise ... Chloé A ... MB Max Birt ... BK Brian K ... D

Phase 1 Virtual Community Meeting – Held March 5th (recording available on project website)

Photo Simulations – Viewpoint Map

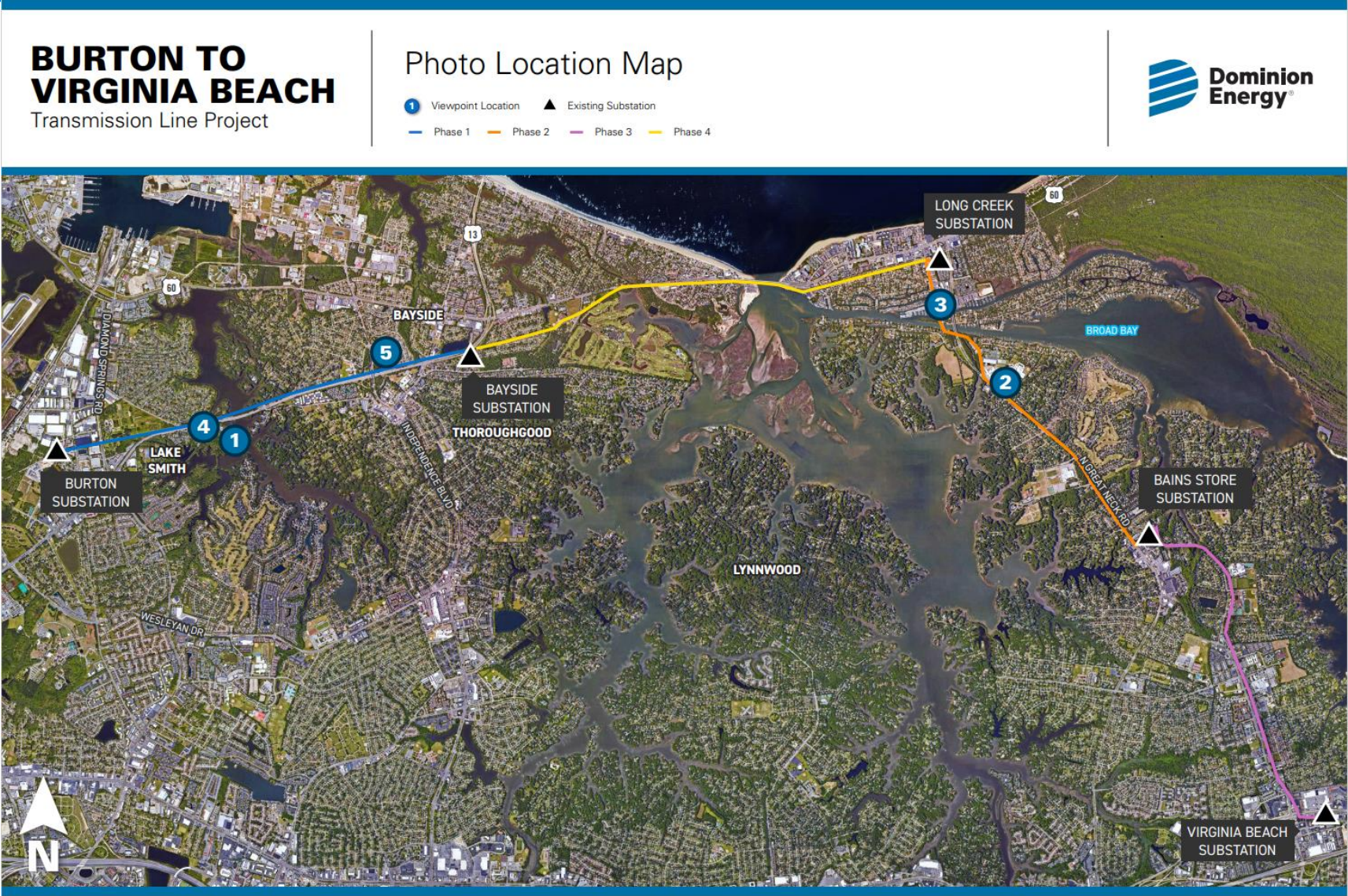
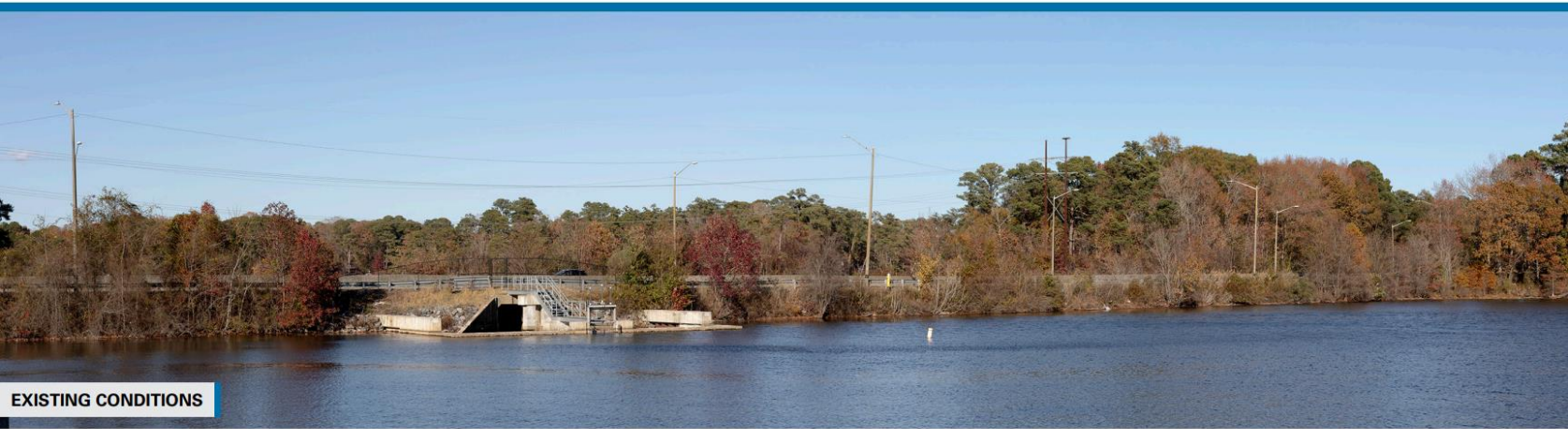


Photo Simulations – Lake Smith

BURTON TO VIRGINIA BEACH Transmission Line Project

Viewpoint 1

Date: 12/05/2024 Time: 3:20 pm Viewing Direction: Northeast
1 Viewpoint Location — Phase 1



EXISTING CONDITIONS



PROPOSED CONDITIONS

Photo simulations are for discussion purposes only. Final design is subject to change pending public, engineering, and regulatory review.

Photo Simulations – North Great Neck Road

BURTON TO VIRGINIA BEACH

Transmission Line Project

Viewpoint 2

Date: 12/05/2024 **Time:** 12:00 pm **Viewing Direction:** Southeast

2 Viewpoint Location — Phase 2

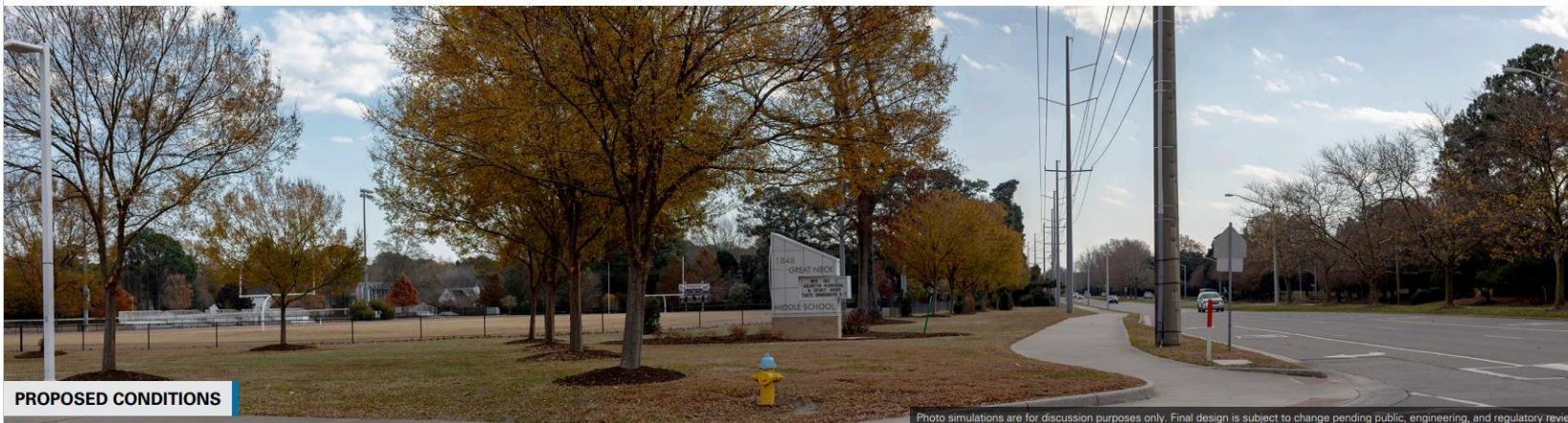
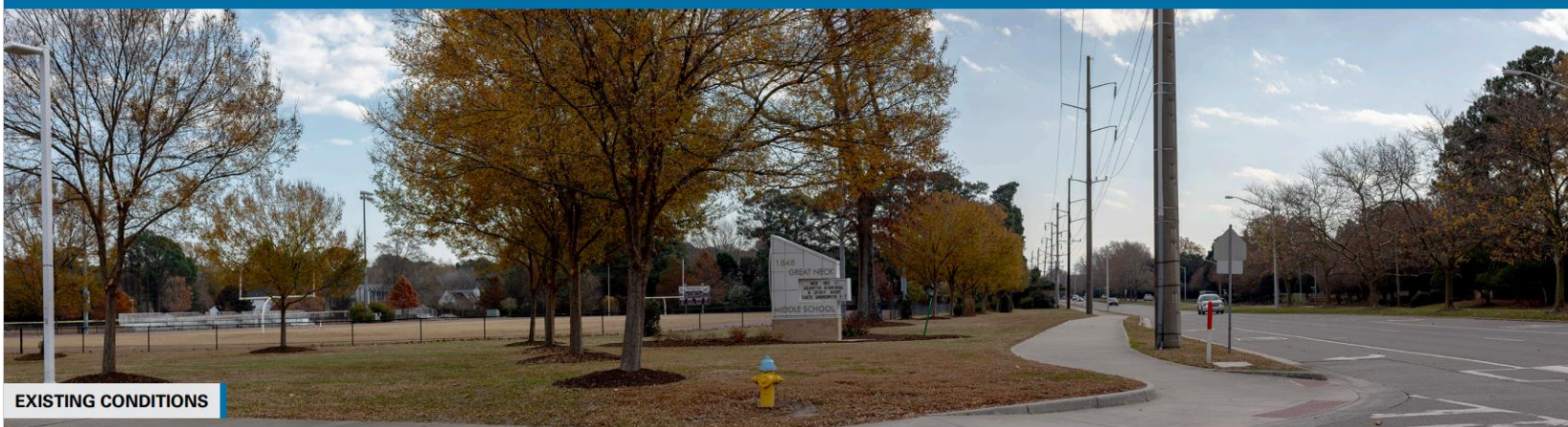


Photo simulations are for discussion purposes only. Final design is subject to change pending public, engineering, and regulatory review.

Photo Simulations – West Great Neck Road

**BURTON TO
VIRGINIA BEACH**
Transmission Line Project

Viewpoint 3

Date: 12/05/2024 Time: 11:15 am Viewing Direction: South
3 Viewpoint Location Phase 2



EXISTING CONDITIONS



PROPOSED CONDITIONS

Photo simulations are for discussion purposes only. Final design is subject to change pending public, engineering, and regulatory review.

Photo Simulations – Northampton Boulevard

The image is a presentation slide for a transmission line project. At the top left, the title "BURTON TO VIRGINIA BEACH" is displayed in large, bold, black letters, with "Transmission Line Project" underneath it. To the right of the title, the section is titled "Viewpoint 4". Below this title, a date and time stamp reads "Date: 12/05/2024 Time: 3:15 pm", followed by "Viewing Direction: Northeast". A legend indicates that a red dot represents the "Viewpoint Location" and a red line represents "Phase 1". In the top right corner, there is a small aerial map showing the project's path through a landscape with greenery and water, with a red circle marking "Viewpoint 4". Next to the map is the Dominion Energy logo, which consists of three stylized horizontal bars above the company name. The main part of the slide features two side-by-side photo simulations. The top simulation is labeled "EXISTING CONDITIONS" and shows a wide, paved road with several utility poles and wires. A large, dense cluster of evergreen trees stands prominently on the left side of the road. The sky is clear and blue. The bottom simulation is labeled "PROPOSED CONDITIONS" and shows the same scene from the same perspective. However, in addition to the existing utility poles, new, taller transmission towers are visible, supporting additional power lines that stretch across the sky. The overall composition is clean and professional, using a color palette dominated by blues, greens, and greys.

Photo Simulations – Rustic Arbor Way (facing Northampton Blvd)

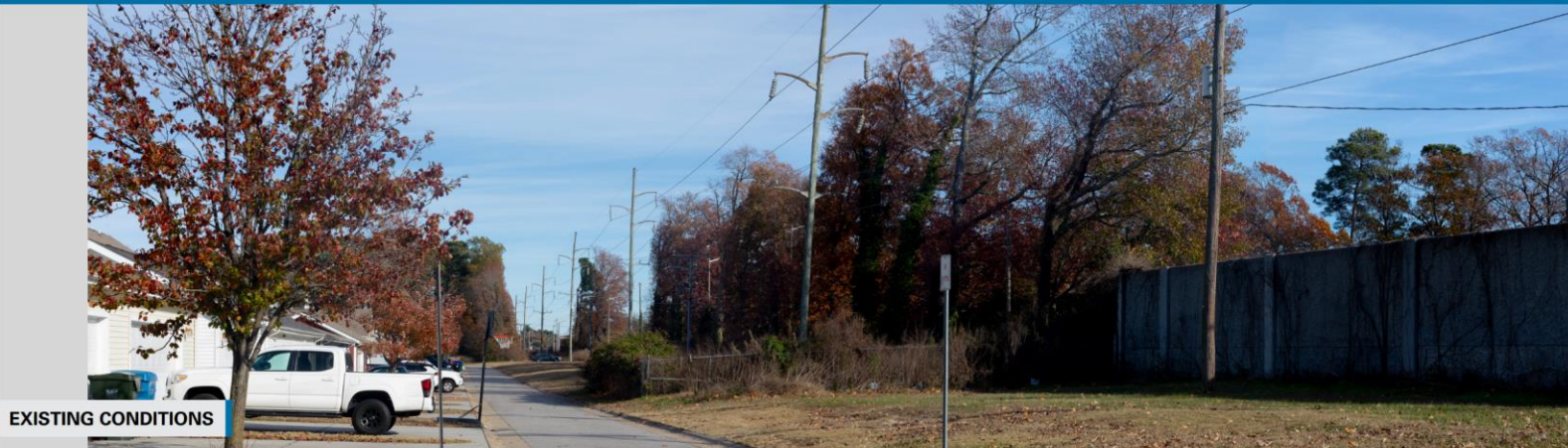
BURTON TO VIRGINIA BEACH

Transmission Line Project

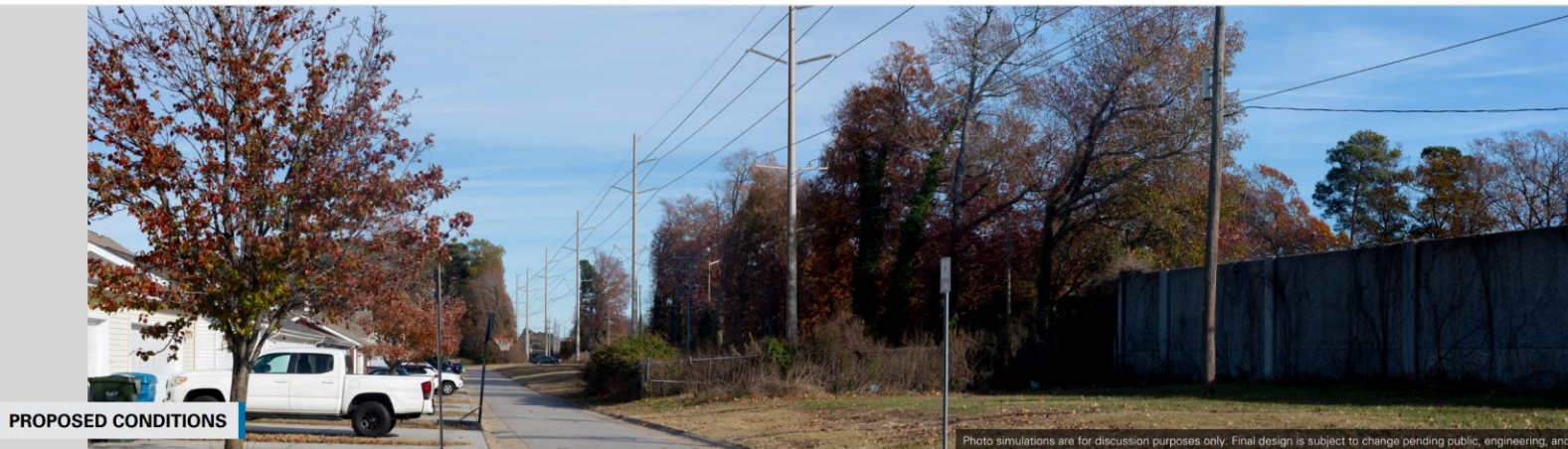
Viewpoint 5

Date: 12/04/2024 Time: 2:58 pm Viewing Direction: Southeast

5 Viewpoint Location — Phase 1 ▲ Bayside Substation



EXISTING CONDITIONS

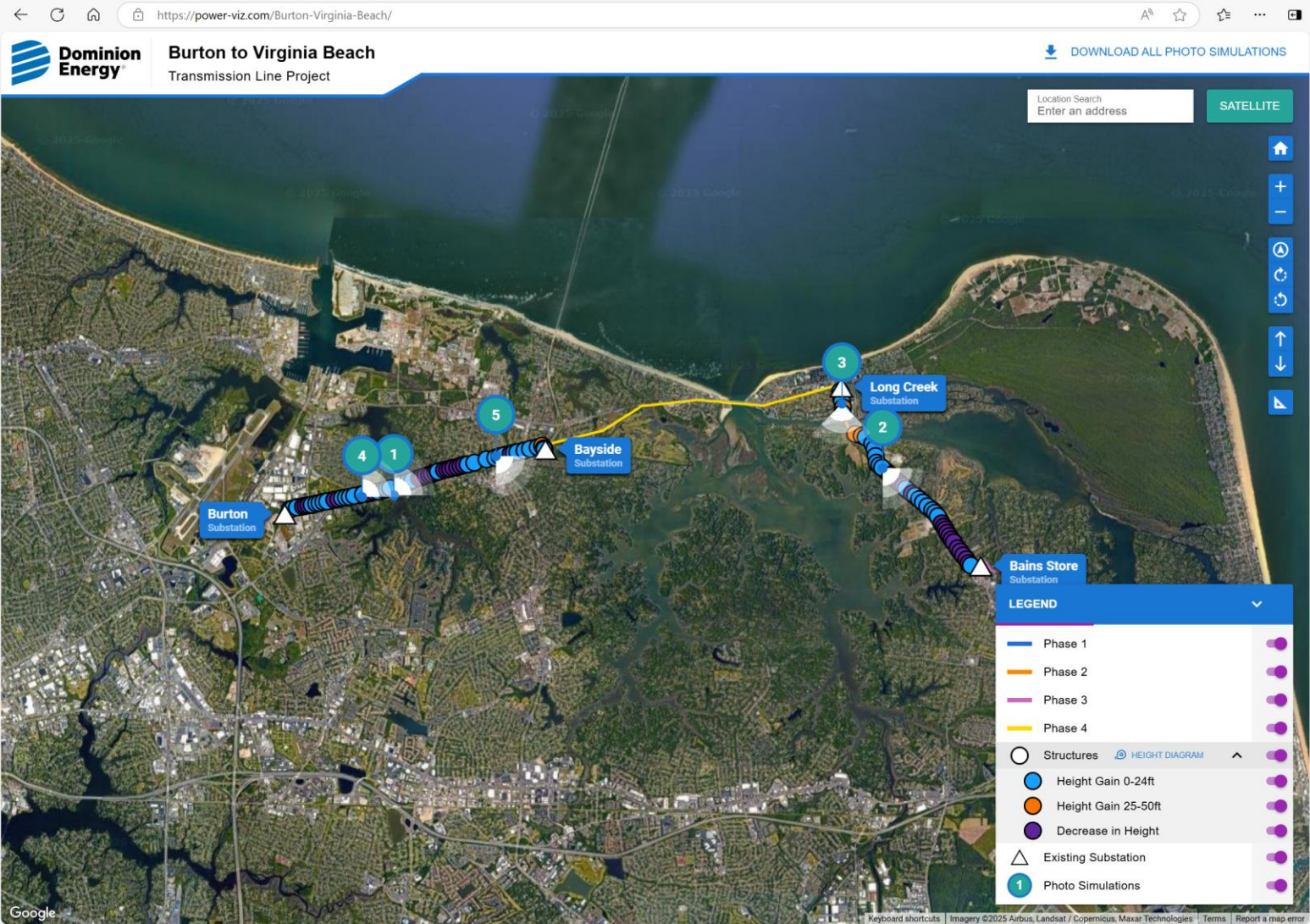


PROPOSED CONDITIONS

Photo simulations are for discussion purposes only. Final design is subject to change pending public, engineering, and regulatory review.

Interactive Project Map

Structure locations, types, and heights



Power-viz.com/Burton-Virginia-Beach

And on project website:

DominionEnergy.com/Burton-Virginia Beach

Next Steps

- Meet with Bayville Farms Dog Park Group (awaiting response)
- Community Open House for Phase 2&3 – TBD (tentatively August 2025)
- Door hangers (continued, for notification of activities nearing the area)
- Additional engagement as phases progress

*Previously met with Friends of Live Oaks and Virginia Beach City Council

Q&A



Thank you for your time!

Connect with us if you have questions or feedback:

Sean Doherty: 804-629-6851

sean.r.doherty@dominionenergy.com