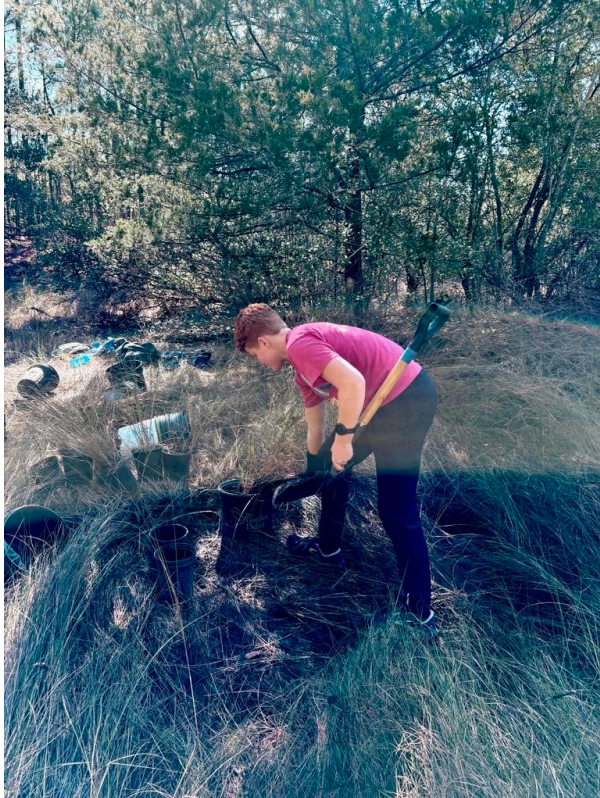

PLEASURE HOUSE POINT NATIVE PLANT HARVEST

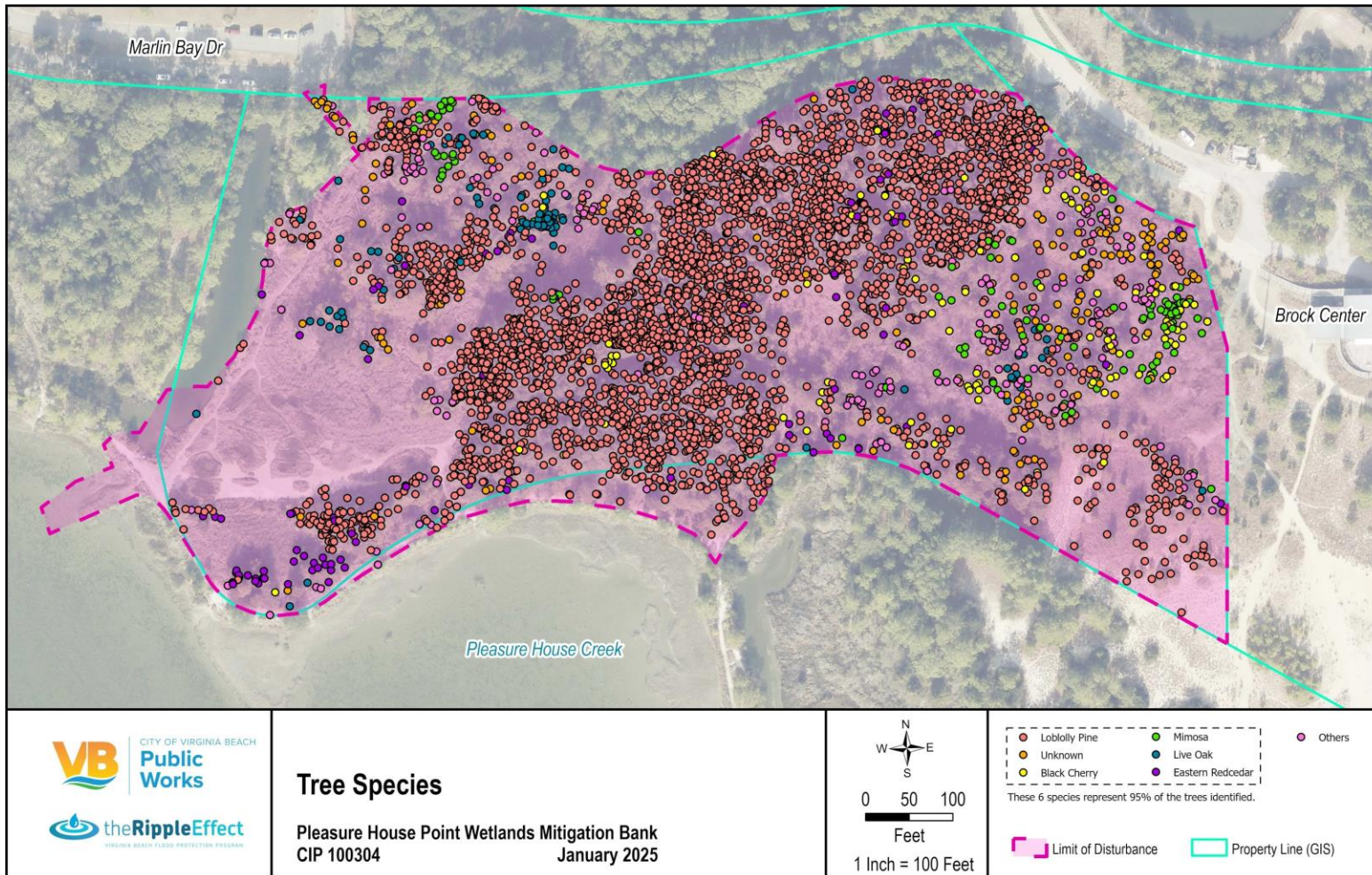
Collaboration between the City of Virginia
Beach, Lynnhaven River NOW, Friends of
Live Oaks, & Chesapeake Bay Foundation



ENVIRONMENTAL STUDIES PROGRAM



TREE AND SAPLING COUNT

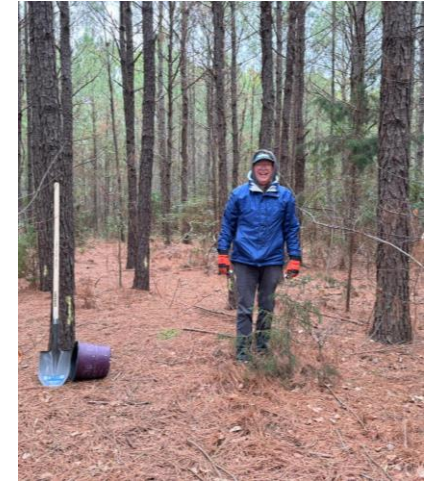


- Environmental Studies students counted and identified all of the trees within the mitigation zone
 - 4,056 (77.79%) are Loblolly Pine
 - 459 (8.80%) are unknown
 - 134 (2.57%) are Black Cherry
 - 116 (2.22%) are Eastern Redcedar
 - 110 (2.11%) are Mimosa
 - 105 (2.01%) are Live Oak
- Students returned to help mark and identify saplings to help in the salvage effort



VOLUNTEERS

- Volunteers from Lynnhaven River Now, Friends of Live Oaks, Tidewater Master Naturalists, Tidewater Appalachian Trail Club, VBCPS Environmental Studies Program, Chesapeake Bay Foundation, and civic league members
- 4 Volunteer Opportunities
- 78 Volunteers
- 340 Volunteer Hours
- 8 City Staff





NATIVE PLANTS

- Live Oaks
- Other Oak Species
- Red Cedar
- Black Cherry
- Southern Magnolia
- Sassafras
- Loblolly Pine
- Wax Myrtle
- Yaupon Holly
- American Holly
- Yucca
- Baccahris
- Spartina Patens
- Common Rush



TREES

- 650+ trees
 - ~100 Live Oaks
 - ~35 given away to volunteers and community members
- Other plant species awaiting inventory

GRASSES

- 180 *Spartina Patens*
- 45 Common Rush
- March 4th harvest - 200 more grasses.
- Will be split into many more plugs





MAINTENANCE

- Live Oaks will be cared for at the VA Tech Agriculture and Research Extension Center (AREC)
 - Will be used by VA Dept of Forestry as a nursery
- All other trees, grasses, and shrubs will be cared for by LRNow



CHANGES TO THE CITY'S PLAN

- Construction changes based on the students' data
 - a 52% reduction in overall width to avoid impacting trees that were identified for protection, particularly mature live oaks
- Coordination between non-profits and wildlife experts to help prevent impacts to turtles and oysters
 - Terrapin fencing will be installed and monitored
- Tree planting shifted to the fall
- Changes to ensure access to the Brock and trails at PHP will have minimal interruptions

INCREASED COMMUNICATION FROM THE CITY

- Project website and a commitment from City staff to add updates approximately every 2 weeks:
<https://pw.virginiabeach.gov/coastal-waterways/pleasure-house-point-wetlands-restoration-project>
- Brochures and door hangers were created for distribution in neighborhoods and nearby community centers
- Management plan and other documentation is available for view at the Brock Environmental Center



MONITORING DURING CONSTRUCTION

Turbidity Testing during the Pleasure House Point Wetland Mitigation Bank Construction.

Dates	Pleasure House Creek	Crab Creek
3/18/2025	60	60
3/4/2025	60	60
Feb-25	44	60
Jan-25	60	60
Dec-24	36	60

- LRNow and William and Mary will be monitoring the Terrapin fencing
 - There are rehabilitators on standby if turtles are discovered
- Weekly turbidity testing and monthly nutrient testing at Pleasure House Creek and Crab Creek
 - Data shared on LRNow website:
<https://www.lynnhavenrivenow.org/water-quality/>

LEGACY OF THE MITIGATION ZONE PLANTS

- 800 plugs of spartina patens and common rush planted to help restore a buffer in the Trantwood area of the Lynnhaven
- Invasive phragmites removed from the area
- 266 spartina patens and 50 common rush were planted on 2 shorelines in the western branch of the Lynnhaven
- More shorelines will be planted from the harvest this spring

